

# ANNUAL REPORT

## 2015/2016





# PHOTO GALLERY



Site visit Makwanpur, April 2016



Community Toilet, Samundratar, Nuwakot



Health Camp, Baramchi



Nibuwatar Health Post under construction



Art Counselling at Alapot, Sundarimal



Group Counselling at Sankhu

# CHAIRPERSON'S FOREWORD



**Mr Mahesh Sharma**  
Chairperson  
**Birat Nepal Medical Trust**  
**(BNMT Nepal)**

Reflecting back on the history when Birat Nepal Medical Trust (BNMT Nepal) was established in 2012, especially on the legacy, commitment, expertise and networking with national and international stakeholders of the Britain Nepal Medical Trust (BNMT UK), it has completed four years of continued effort towards improving the health and well-being of the people of Nepal.

Following the last years' devastating earthquake of 25 April 2015, after the initial relief and support phase, government and international communities were active in mobilising communities, NGOs, private sectors, national and international organisations for 'building back – a better Nepal'. In this course, BNMT Nepal also actively contributed with support and guidance from government, particularly from the Ministry of Health. BNMT Nepal actively participated in the coordination effort of Ministry of Health and other partners including donors.

We were pleased to reconstruct seven damaged health facilities with new pre fab structures in Makwanpur district and constructed community toilets for the community in Lalitpur, Bhaktapur and Nuwakot districts. We conducted number of psychosocial and mental health counselling sessions and organised number of free health camps.

Besides, the government effort of cash distribution to individual household for reconstruction of damaged houses is now gradually picking up despite several months delay. Resuming the health services through peripheral health facilities has been the priority move of Ministry of health.

All these efforts will certainly contribute for better health of people, but the deeper health and social issues like disparities between different social and ethnic groups, and between different regions of the country remains. For BNMT Nepal, we now see that the real challenge is to address these inequalities through better targeting, and to sustain and scale up the successes, while at the same time intensifying the effort in disaster hit areas towards Building back better Nepal.

We are committed towards this goals of building back Nepal.

We would like to thank all of you who have supported us in the past and who continue to support us. We look forward at expanding partnership and collaboration with government bodies, national and international agencies and individuals towards achieving the Building back better Nepal goal.

# MESSAGE FROM THE EXECUTIVE DIRECTOR

It is my great pleasure to bring out the annual report of the Birat Nepal Medical Trust (BNMT Nepal) for the year 2015/16. BNMT Nepal is built on the foundation of Britain Nepal Medical Trust UK with a commendable history of serving the people of Nepal since 1967. BNMT Nepal has been supporting the government program on Maternal health, adolescent and child health, TB, HIV/AIDS, malaria and WASH to help government in achieving targeted Sustainable Development Goals (SDGs) especially goal 3, 5, 6, 9 and 10.

At present BNMT Nepal has been working in post disaster reconstruction and recovery programme in health. The programmes have been supported by americares, Big Lottery Fund and BNMT UK.



**Mr Suman Chandra Gurung**  
Executive Director

## Some remarkable achievements made during the year by BNMT Nepal:

- » Reconstruction of four health facilities infrastructure in Makwanpur district
- » Constructed three community toilets in Bhaktapur, Lalitpur and Nuwakot districts which benefited internally displaced population, school children and community people.
- » Conducted free health camps and distributed free medicines by specialists to the unreached population. About 3100 people directly benefited from the health camps.
- » Essential medicines worth US\$ 500,000 supported to government and other hospitals.
- » Mental health and psychosocial services were provided to minimize the psychological trauma and prevent suicidal cases in Makwanpur, Bhaktapur and Kathmandu districts. A total of 2087 individuals benefitted from psychosocial interventions.
- » Community water sanitation and hygiene interventions helped to minimize the water borne diseases and infectious diseases in project areas.
- » BNMT Nepal is managing the Eastern Regional TB Quality Control Centre (ERTQCC) directly benefiting 16 districts of the region.
- » BNMT Nepal conducted 'Post-Intervention study on Effectiveness of Integration of Family Planning into Agriculture and Economic Empowerment Program for Access and Coverage: ADRA/Technical Integration Coverage and Access' project in Palpa, Rupandehi and Kapilvastu district.

In future BNMT Nepal has envisaged, but not limited to, work in prevention of communicable diseases and epidemic preparedness and management; Psychosocial counseling; water sanitation & hygiene, disaster risk management, reconstruction of health facilities infrastructure, Tuberculosis case management.

My sincere thanks go to the donors especially americares and Big Lottery Fund (BLF) for their invaluable support in program planning and implementation. I also appreciate the Government of Nepal, BNMT UK and BNMT Nepal team for their tireless support to improve the health status of the people of Nepal.



# PROGRAMMES

## MENTAL HEALTH AND PSYCHOSOCIAL SUPPORT PROGRAM

In the aftermath of the 2015 earthquake, individuals and families from earthquake-affected areas suffered both physical as well as mental anguish. The psychosocial problems amongst earthquake survivors who lost homes, loved ones and family members emerged as one of the major health concerns in the earthquake-affected areas of Nepal. With lots of lives, dreams and comfort buried under the rubble of the buildings, survivors of the earthquake in the capital city were in dire need of mental and emotional support. Taking mental health and psychosocial wellbeing as an important aspect to be addressed, BNMT Nepal started the Mental Health and Psychosocial Support (MHPSS) program as one of its most important public health interventions.

The MHPSS program started in Kathmandu, Bhaktapur and Makwanpur on May 2015, after consultation with governmental authorities, and is still in operation even after a year. Essentially, a total of 2087 individuals directly benefitted from the program through individual and group counselling sessions, psychosocial education classes, art therapy, follow up sessions and trainings/orientations.



Following a need assessment conducted in the earthquake affected communities; BNMT Nepal counselors identified the psychosocial needs of the individuals and provided counseling with minimum of four to six follow up sessions targeted to vulnerable groups such as women, children and elderly citizens. Similarly, they also provided psychosocial education and training/orientation sessions to community volunteers, FCHVs, health workers, teachers and

students to enable them to deal with psychosocial problems in their communities. They held series of psychosocial intervention programs involving various thought-provoking/stimulating activities such as art, drawing of individual emotional wheels, meditation, relaxation, games etc. in various schools. In the sessions, the counselors exposed the students to psycho-social education covering topics like stress management, trauma management, suicide prevention and management.



BNMT Nepal also helped form psychosocial support groups in its working areas in order to reach the unreached population in the community, to identify cases for referrals. In this way the indirect beneficiaries were the whole population of these districts.

The psychosocial support provided by the team brought positive changes in the beneficiaries. After the counseling sessions, many traumatized people started practicing various coping mechanisms such as art, yoga, meditation, assertiveness, deep breathing and relaxation exercises to minimize their stress and psychosocial problems in their lives. They began to return to their day to day activities and became more open, relaxed, and resilient.

Overall, the psychosocial counseling and support program helped the beneficiaries improve positive attitude, increase school attendance and prevent further suicidal attempts in the affected communities.



## 2087 Direct Beneficiaries



**1011**  
STUDENTS



**859**  
WOMEN



**105**  
ELDERLY PEOPLE



**13**  
SCHOOLS



**52**  
PEOPLE COUNSELLED  
AND FOLLOW UP



**60**  
PEOPLE TRAINED AND  
ORIENTED ON  
PSYCHOSOCIAL  
SUPPORT

*BNMT also received a letter of appreciation from DPHO, Kathmandu on November 15th, 2015 for its tireless technical assistance to address issues of mental health and psychosocial support in the district.*

## WATER, SANITATION AND HYGIENE (WASH) PROGRAMME

With many households including toilets destroyed by the earthquake, many people in the IDP camps had no access to toilets. Anticipating outbreaks of communicable diseases posed by lack of proper sanitation facilities and to provide healthy sanitation facilities for the affected people, the local government officials and community people approached BNMT to initiate WASH programs in the community. BNMT Nepal thus constructed three additional community toilets in Bhaktapur, Lalitpur and Nuwakot districts in the previous year.

### NEED ASSESSMENT

Prior to the construction of gender friendly toilets in three districts, BNMT Nepal conducted need assessment and observed open defecation practice among the community people as a result of destruction of sanitation facilities. These areas had also witnessed a relative increase in diarrheal cases among children therefore construction of toilets was a major necessity in these areas.

### ADDRESSING DEMANDS

The demand for the construction of community toilets arose from the community people of the municipalities/VDCs as well as from the D/PHOs. Therefore, on the request of the government authorities of these areas and after the need assessment made by BNMT team, the construction activities of four compartment community toilets were initiated in the densely populated areas of the three districts.

### COMMUNITY PARTICIPATION

Community participation has always been the basis of our project in every phase of the construction process. The communities managed the land, provided some financial support, human resources and invested their time in the implementation and monitoring of construction activities.

**BNMT Nepal constructed three additional community toilets in:**

- » Samundratara-1, Nuwakot
- » Bungamati-12, Lalitpur
- » Chokhate-1, Bhaktapur





Community Toilet at Samundratar-1, Nuwakot



Community Toilet at Bungamati-12, Lalitpur

To prevent the outbreak of water borne diseases, BNMT distributed water purifier bags with 27 water purifier packets in the Sherpa IDP Camp of Jagdol, IDP camps of Kathmandu, Bungamati, Lalitpur, and Maheshori Khelmaidan, Bhaktapur.

During each phase of the programs, BNMT actively engaged communities and relevant stakeholders in the development and implementation of sustainable WASH interventions. This initiative was appreciated by community and local government.



3

COMMUNITY TOILETS  
CONSTRUCTED



436

FAMILIES RECEIVED  
WATER PURIFIER BAGS



3

WASH COMMITTEES  
FORMED AND ORIENTED  
AND STILL ACTIVE



## MAINTAINING SUSTAINABILITY

Inclusive WASH committees were formed by BNMT in order to ensure greater access, maintenance of hygiene and promotion of toilets in the community. The WASH committees were also oriented on hygiene and proper maintenance of the toilets and monitoring from BNMT staff from time to time.

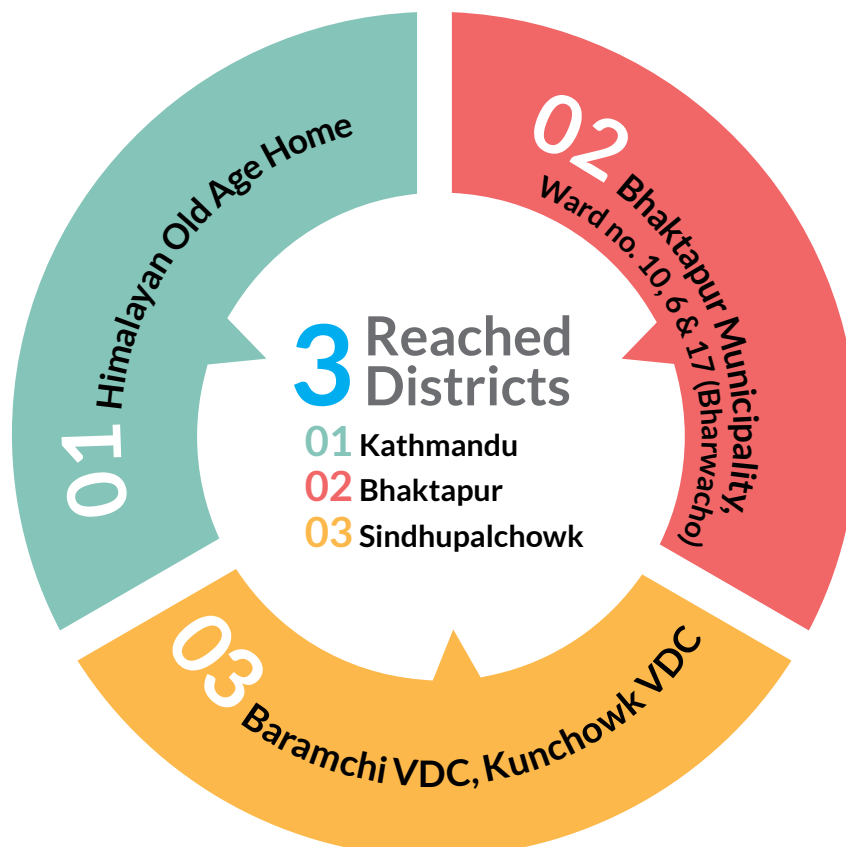
## VOICE FROM THE COMMUNITY

Mr. Madhukar Tuladhar, Principal of Tri-Ratna Cooperative Secondary School and Mr. Rajan Maharjan, Past President of Rotaract club of Metro city thanked BNMT Nepal for its support in the construction of these toilets which had been lacking in the surrounding areas. He also mentioned that after the earthquake, the place had witnessed an increase in open defecation and diarrheal cases of children. He highlighted that it will be shared responsibility of communities to maintain the toilets in the future.



## FREE HEALTH CAMPS

BNMT Nepal, along with a team of specialists' doctors' (General Medicine, orthopedics, obstetrics/gynecology, pediatrics and surgery) conducted several health camps in hard to reach earthquake-affected communities as the continuation of program, 'Earthquake Response and Relief Initiatives since May 2015'. These health camps ran with the objective of delivering free medical services to the affected communities at their doorsteps along with the provision of specialists and regular follow up camps. The targeted beneficiaries comprised of vulnerable population such as earthquake victims, pregnant women, lactating mothers, children and elderly. In the camps, appropriate referral services were also provided to those who needed long-term attention.



**3100**  
individual  
health  
consultations

## DIRECT BENEFICIARIES

**10%** Children  
**32%** Elderly People  
**58%** Adults

## HEALTH CAMP PRIORITIES

- General consultations
- Child Health
- ENT
- Gynecology and obstetrics
- Orthopedics
- Geriatric Health
- Mental Health

BNMT ensured active community participation throughout the health camps conducted over the one year period.



*Health Camp in Baramchi, Sindhupalchowk*



*Health Camp in Sipapokhare, Sindhupalchowk*

## ESSENTIAL MEDICINES SUPPORT

Appropriate and effective medicine is an indispensable component of primary health care and the timely administration of essential medicines to treat injured or sick people was crucial during the earthquake. Anticipating the needs of the affected people, BNMT has been supporting government health facilities and non-governmental organizations by providing essential medicines during the past year. Similarly, on the request of Ministry of Health (MoH), BNMT also provided essential medicines to Logistic Management Division (LMD). In total, essential medicines worth US \$ 500,000 was provided by BNMT Nepal.



Handover of Essential Medicines to Central Jail Hospital



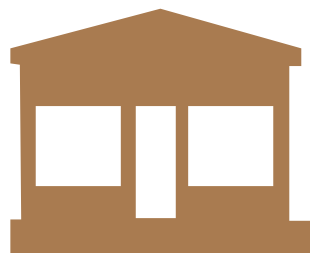
Essential Medicines provided to Okhaldhunga DHO

### ESSENTIAL MEDICINES SUPPORT TO:

- » Logistic Management Division (LMD), Ministry of Health
- » Teaching Hospital, Maharajgunj, Kathmandu
- » Tamakoshi Cooperative Hospital, Ramechhap
- » Family Hospital in Thecho, Dhapakhel, Lalitpur
- » Central Jail Hospital, Tripureswor
- » Motherland Hospital, Bhaktapur
- » Kanti Children's Hospital, Maharajgunj, Kathmandu
- » District Health Office (DHO), Okhaldhunga
- » District Health Office, Nuwakot
- » POSSIBLE, Dolakha



SUPPORTED  
**6**  
HOSPITALS



SUPPORTED LMD AND  
**2**  
DISTRICT HEALTH  
OFFICES



SUPPORTED  
**1**  
NGO in DOLAKHA



## TUBERCULOSIS CONTROL PROGRAM

Since inception, BNMT has been working with the Government of Nepal for prevention and control of Tuberculosis. BNMT has had extraordinary achievements over the last 50 years such as remarkable gains in case notification, sputum slides examination and quality control of sputum cases making a significant contribution to the national TB control program especially in the Eastern Region of Nepal.

Past evidence in earthquake affected countries shows that tuberculosis case rates remain stable in the immediate aftermath of natural disasters. In Nepal, however, crowded Internally Displaced Population (IDP) camps, disruption of DOTS therapy and prolonged duration of stay posed significant risk of developing Tuberculosis; making this an important issue. Soon after the massive earthquake of 25 April 2015, BNMT worked with National Tuberculosis Center (NTC) in preparation of National Tuberculosis Program Post Disaster Need Assessment (NTP-PDNA) guidelines for TB control in these affected districts.

### CONTINUING TB QUALITY CONTROL: ACHIEVEMENTS IN 2015/16

BNMT Nepal manages the Eastern Regional Tuberculosis Quality Control Centre (ERTQCC) in close coordination with the Ministry of Health of Nepal in quality control in the Eastern Region. The ERTQCC is located within the Nepal Anti-Tuberculosis Association (NATA) Morang premises in Biratnagar. BNMT Nepal is responsible for providing the human resources as well as the Quality Assurance of TB Microscopy in the microscopy labs of the Eastern Region. The ERTQCC also helps to improve the cost-effectiveness and reduction of errors by promoting uniformity in the process used and maintaining a high standard. It helps to reduce and minimize the waste that occurs in the process of TB microscopy. In the long run, it helps in maintaining high quality of TB Control and proper sustainability of services.

#### TB Microscopy: Highlights from 2015/16

- » 5,109 slides were examined from 121 functioning microscopy Centers. Out of total slides, 8.2% were found positive whereas 91.8% were negative.
- » 99 microscopy centers participated in quality assurance program.
- » 79 laboratories had no false results and hence categorized as excellent microscopy centers.
- » 16 laboratories did not achieve the target of NTP. They were considered poor performing.

### “CAPACITY BUILDING OF LABORATORY STAFFS”

Building the capacity of laboratory staffs provides significant contribution to TB case detection and is also a core functional activity of Quality Control. In 2015, altogether 25 laboratory staffs from low performing laboratories enhanced their capacities through trainings and skill development programs. Basic examination and refresher training for sputum microscopy and identification of bacteria were provided. Timely supervision by ERTQCC staff was an integral component in TB Quality Control Process

### COMMEMORATING WORLD TUBERCULOSIS DAY, 2016

On 24th March 2016, World Tuberculosis Day was celebrated worldwide with the slogan “Unite to End TB”. To commemorate this important public health day, BNMT participated in an event organized by National Tuberculosis Centre (NTC) along with various divisions and departments of the Ministry of Health and civil society organizations actively working in the sector of TB control. BNMT Nepal, including other national and international organizations, displayed their achievements and activities related to Tuberculosis in various stalls on that day.

## SCREENING SUSPECTED CASES THROUGH MICROSCOPIC CAMP

Slum settlements with overcrowding and poor sanitary conditions put the population at risk of Tuberculosis and infectious diseases. Focusing on these populations, BNMT in collaboration with Nepal Public Health Students' Society conducted screening camps for Tuberculosis in slum settlements near Manohara of Kathmandu district where:

- » **144** suspected cases were screened for Tuberculosis from two days' microscopy camp.
- » Immediate Psychosocial counseling and support was provided to people suffering from Tuberculosis.



World TB Day Celebration, 2016



Examining sputum slides of TB patients



MoH Secretary visiting BNMT Nepal stall

## AWARENESS RAISING PROGRAMS

Enhancing TB related knowledge of communities through health camps has always been at the centre of preventive activities in post- earthquake scenario. Meanwhile, BNMT Nepal conducted awareness raising activities in five earthquake affected districts (Bhaktapur, Makwanpur, Nuwakot, Sindhupalchok and Kavrepalanchok) through free health camps. This activity has been integrated in WASH and MHPSS interventions as well. BNMT also distributed TB related leaflets and pamphlets to raise awareness and promote treatment seeking behaviour in the communities and IDP camps.



TB awareness Campaign Rally



Preparation of Sputum Specimen

## TB CONFERENCE IN NEPAL: HIGHLIGHTING “INTENSIFIED COMMUNITY BASED CASE FINDING TUBERCULOSIS”



Nepal Anti-Tuberculosis Association (NATA) organised a conference on 26th and 27th May 2016 with the theme “TB and lung health” with an objective to update knowledge on Tuberculosis and lungs diseases of the South- East Asian Region (SEAR). Representatives from seven different Asian Countries were present in the conference held in Kathmandu. BNMT was among the participants representing Nepal. Essentially, Dr. Kulesh Thapa, Country Representative of BNMT UK and also a panellist at the conference, presented a paper entitled “Intensified Community based active Tuberculosis Case Finding in Nepal” highlighting the contribution of community based active case finding to early diagnosis and case detection strategies of the National Tuberculosis Control Program.

## BUILDING A FUTURE – A CASE STUDY

Disasters not only bring physical losses but also hamper desires and ambitions of those who survive. Jinu Koju, a 16 year old girl from Byasi, Bhaktapur is one of such. The earthquake of April 25, 2015 destroyed her house in Byasi and shattered the happiness of her entire family. A year after this incident, her father committed suicide. After his death, economic hardship heightened in the family and Jinu had to take care of her mother and brother, letting her dreams of attaining higher education fade away. While BNMT Nepal was conducting post-earthquake initiatives in Bhaktapur Municipality, the team came to know about the situation of this girl through one of the representatives from the Municipality. Jinu was indeed very good at studies and had scored a GPA of 3.7 in her grade 10. Thus, BNMT Nepal decided to provide financial support in her higher studies and helped her get admission in Khwopa College, the college of her interest, in Science stream, the subject of her interest so that she could continue her education in the way she had desired. This way, BNMT Nepal is supporting the needy people to achieve their goals and ambitions for their better future.



# PROJECTS

## HEALTH FACILITIES RECONSTRUCTION & HEALTH SERVICE STRENGTHENING IN MAKWANPUR DISTRICT



According to the Ministry of Health (MoH), a total of 767 health facilities have been destroyed in the earthquake (342 were completely destroyed, and 281 were partially damaged). Makwanpur was also among the 14 hardest-hit districts as categorized by National Planning Commission (NPC) where 33 people lost their lives and 229 were injured in the earthquake. A Total of 45 health facilities had been destroyed or damaged beyond use by the earthquake in Makwanpur district.

In consultation with the District Public Health Office, Makwanpur, Central Regional Health Directorate (CRHD) and Ministry of Health (MoH), BNMT Nepal found that Health posts in *Tistung, Nibuwatar, Phakhel, Makwanpurgadhi, Basamadi, Dhiyal and Khairang* had been completely destroyed, and delivery of proper health care services had been disrupted. BNMT Nepal, at the request of DPHO Makwanpur, came to the forefront to resolve of these issues. BNMT Nepal started 18 months' project funded by americares for construction of seven prefabricated health posts in these VDCs and enhancing the capacity of health workers to functionalize the smooth delivery of health services.

In the first phase, BNMT Nepal constructed prefabricated Type-I health posts in four VDC's - *Tistung, Nibuwatar, Phakhel, Makwanpurgadi* from February 1st 2016. BNMT Nepal also supported the health posts with necessary essential medical equipment as per government guideline in order to facilitate primary health care services in the communities.

In the second phase, BNMT will start the construction of prefabricated type -I health posts and plans to supply basic medical equipment in three VDC's - *Basamadi, Dhiyal and Khairang* of Makwanpur District, from August 2016.

### SUSTAINABILITY OF THE PROJECT

#### 1. WASH intervention:

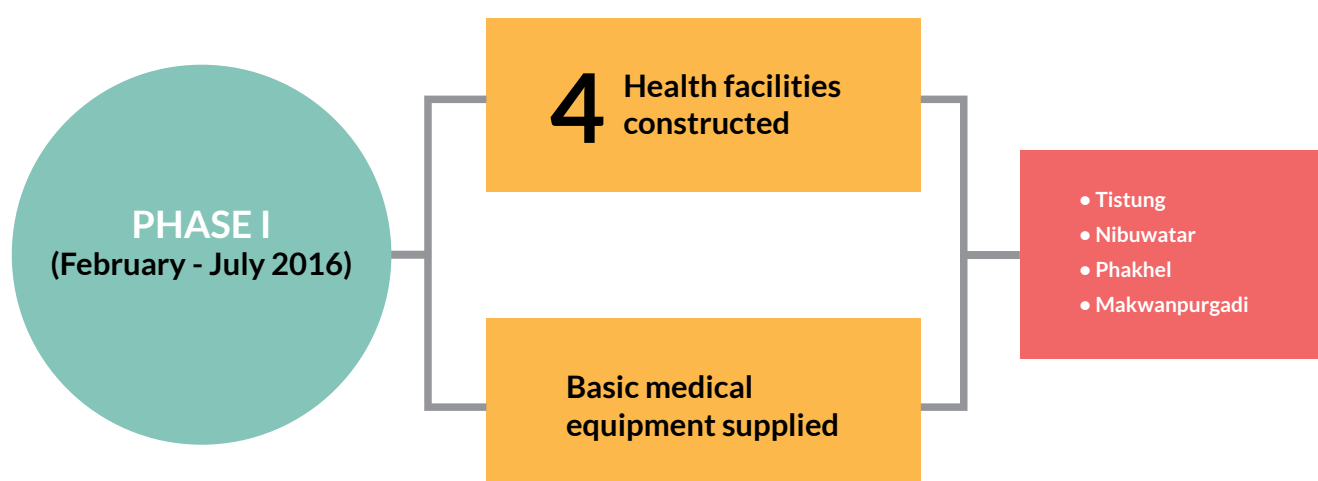
- Commitment and ownership from WASH committee of each health post for regular water supply, cleanliness and proper maintenance of gender friendly toilets.
- Continuation of WASH programs in community by trained/ oriented community volunteer/ leaders
- Transfer of knowledge on menstrual hygiene management by oriented school adolescents to other students, family members and community people

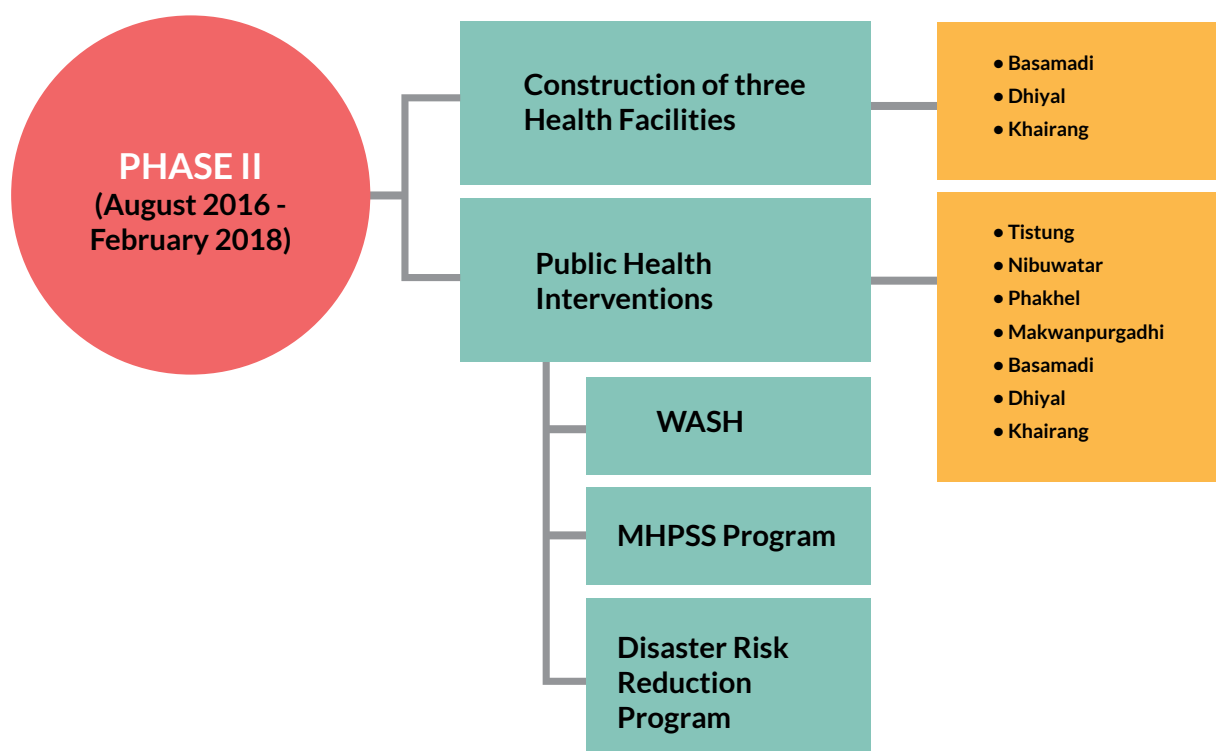
#### 2. Prefabricated Health Post:

- HFOMC and DPHO will be responsible for the proper maintenance and provision of primary health care services through newly constructed health posts.
- DPHO will also be responsible for the maintenance of basic medical equipment by respective health facilities and HFOMC
- Monitoring by BNMT from time to time.

#### 3. Mental Health and Psychosocial Support Programs:

- Commitment by health workers to provide psychosocial counseling in health facilities as a part of routine primary health care services
- Continuation of psychosocial programs in other communities and schools by trained non-prescribers (FCHVs, HFOMCs, local/ social leaders, teachers)
- Involvement of all concerned in the celebration of World Mental Health Day.
- Advocacy and lobbying for the integration of mental health topics in school curriculum





The project aims to strengthen health service delivery and promote community health of all seven VDCs. Different public health interventions: Community WASH intervention, MHPSS program and Disaster Risk Reduction (DRR) will be implemented in close coordination with government line agencies, other concerned stakeholders and active participation of the communities. BNMT Nepal has consulted with the most vulnerable populations, namely women, pregnant women, children, elderly, marginalized, disadvantaged groups, ethnic minorities, the poorest of the poor to understand their current situation. BNMT Nepal believes that this method will help them to identify and tackle these existing difficulties and problems which will empower them to identify and solve problems in the future and help in the formation of a resilient community. BNMT will carry out different activities in the various communities such as Capacity enhancement training on WASH, MHPSS, and DRR to health workers and community people, construction of gender friendly toilets, establishment of awareness programs, community and school Psychosocial Support (PSS) program, Menstrual Hygiene Management (MHM) program/awareness and equipment placement of DRR.



*Nibuwatar Health Post*



*Makwanpurgadi Health Post*



*Phakel Health Post during construction*



*Monitoring visit by Ministry of Health and americares*

## ENHANCING COMMUNITY HEALTH IN NEPAL



The massive earthquake on 25th April, 2015 and its aftershocks has led to nearly 9,000 deaths and leaving more than 23,000 injured with irreparable damage to settlements and historical monuments (PDNA Report, 2015; NPC 2015). With lives lost, dreams and comfort buried in the rubble of the buildings, survivors of the earthquake suffered both physical as well as mental anguish. The Government of Nepal identified 14 districts as the most affected after the earthquake. Even after a year of the disaster, many of the local level health facilities were destroyed and communities have not been able to access basic as well as mental health services. The challenges anticipated are social distress, such as: traumatized cases in community, poor WASH condition and risk of WASH related diseases outbreaks, poor access to health services and lack of knowledge on infectious diseases.

Since the tragic event, BNMT has been upfront to create a streamlined multi-district post disaster community focused response and relief to protect dignity and enhance the resiliency of communities and survivors. Big Lottery Fund (BLF) funded 'Enhancing Community Health in Nepal' project is one of the programs of BNMT launched in five of the earthquake affected districts namely Makwanpur, Sindhupalchowk, Nuwakot, Bhaktapur and Kathmandu. The major objectives of the project are to reduce psychosocial problems in the communities, decrease in diarrheal and WASH related diseases and increase availability of health services in the communities. After the completion of the project, the outcomes are foreseen to ultimately lead to improve community health and increase resilience through strengthening health services and improve health seeking behavior in the community.

The project started in July 2016 and one of the inception meetings with the stakeholders has already been conducted in the Makwanpur (one of the intervention district).



*Inception Meeting with Stakeholders, Makwanpur*

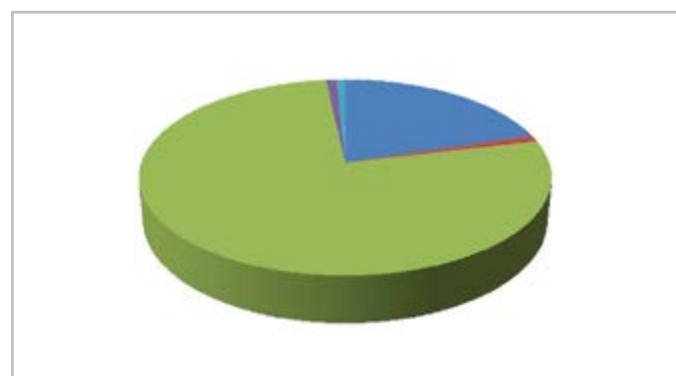


# FINANCE

## Balance Sheet as at 3/31/2073 (July 15,2016)

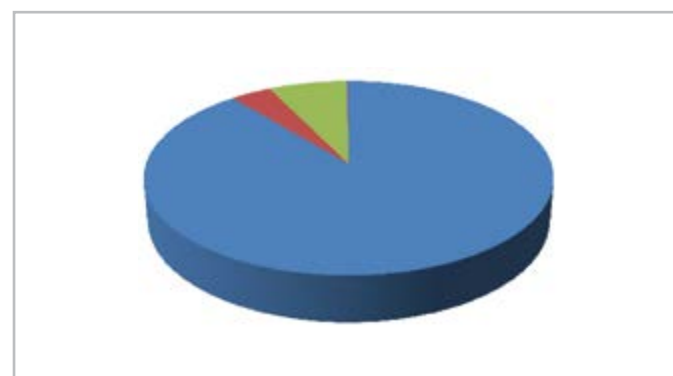
Details	2072/73		2071/72	
	Amount (NRS)	Amount (NRS)	Amount (NRS)	Amount (NRS)
<b>Fixed Assets</b>				
Tangible Assets		1,137,027		226,556
<b>CURRENT ASSETS</b>				
Debtors	3,610,151		763,124	
Investments	-		-	
Cash in Hand	31,687		30,000	
Cash at Bank		17,415,726		9,616,695
		<b>21,057,564</b>		<b>10,409,819</b>
<b>LIABILITIES AND PAYABLES</b>	(379,520)		(295,521)	
<b>NET CURRENT ASSETS</b>		<b>20,678,044</b>		<b>10,114,298</b>
<b>TOTAL ASSETS LESS CURRENT LIABILITIES</b>		<b>21,815,071</b>		<b>10,340,854</b>
<b>CHARITY FUNDS</b>				
Restricted funds		18,167,631		2,954,365
Unrestricted funds		3,647,440		7,386,489
		<b>21,815,071</b>		<b>10,340,854</b>

Total Income: NRs 33,574,379



- BNMT UK
- ADRA Nepal
- americares
- Misc. Donations
- Other Income

Total Expenditure : NRs 22,361,853



- Program Expenditure (Direct Charitable)
- Support Costs- Admin
- Support Costs- HR
- Costs Of Generationg Income

# //// DONORS AND PARTNERS

We express our earnest gratitude to all our donors and partners for their unswerving cooperation in our efforts and actions. We are obliged to our partners and all other donors who have encouraged and assisted us tirelessly in our programs and projects in Nepal. Our hard work would have been incomplete without the generous and consistent support from our donors and partners.

## ORGANIZATIONAL DONORS

1. americanes
2. Big Lottery Fund (BLF)
3. The Britain Nepal Medical Trust, UK
4. Handle With Care, Australia
5. ADRA Nepal

## INDIVIDUAL DONORS

1. Felicity Claire Virgo
2. Simon Sinclair
3. Ms Sushma Manandhar

## PARTNERS

1. Ministry of Health
2. Department of Health Services
3. National Tuberculosis Centre
4. National Health Training Center (NHTC)
5. District Health Offices
6. District Public Health Offices
7. Municipalities/VDCs
8. Health Facilities Operation and Management Committees (HFOMC)
9. Local NGOs/Civil Society

It is with great pleasure that we see the work of BNMT Nepal developing and flourishing today. This year's annual report gives a comprehensive overview of BNMT Nepal's tremendous response to the devastating earthquakes of 2015. BNMT UK remains committed to supporting the work of BNMT Nepal now and into the future - continuing the legacy established by BNMT UK almost fifty years ago.



Special thanks to the Co-Chair of the Britain Nepal Medical Trust UK, Dr Gillian Holdsworth and Prof Surya P Subedi OBE for their continuous guidance, support and encouragement in BNMT Nepal's overall demeanors

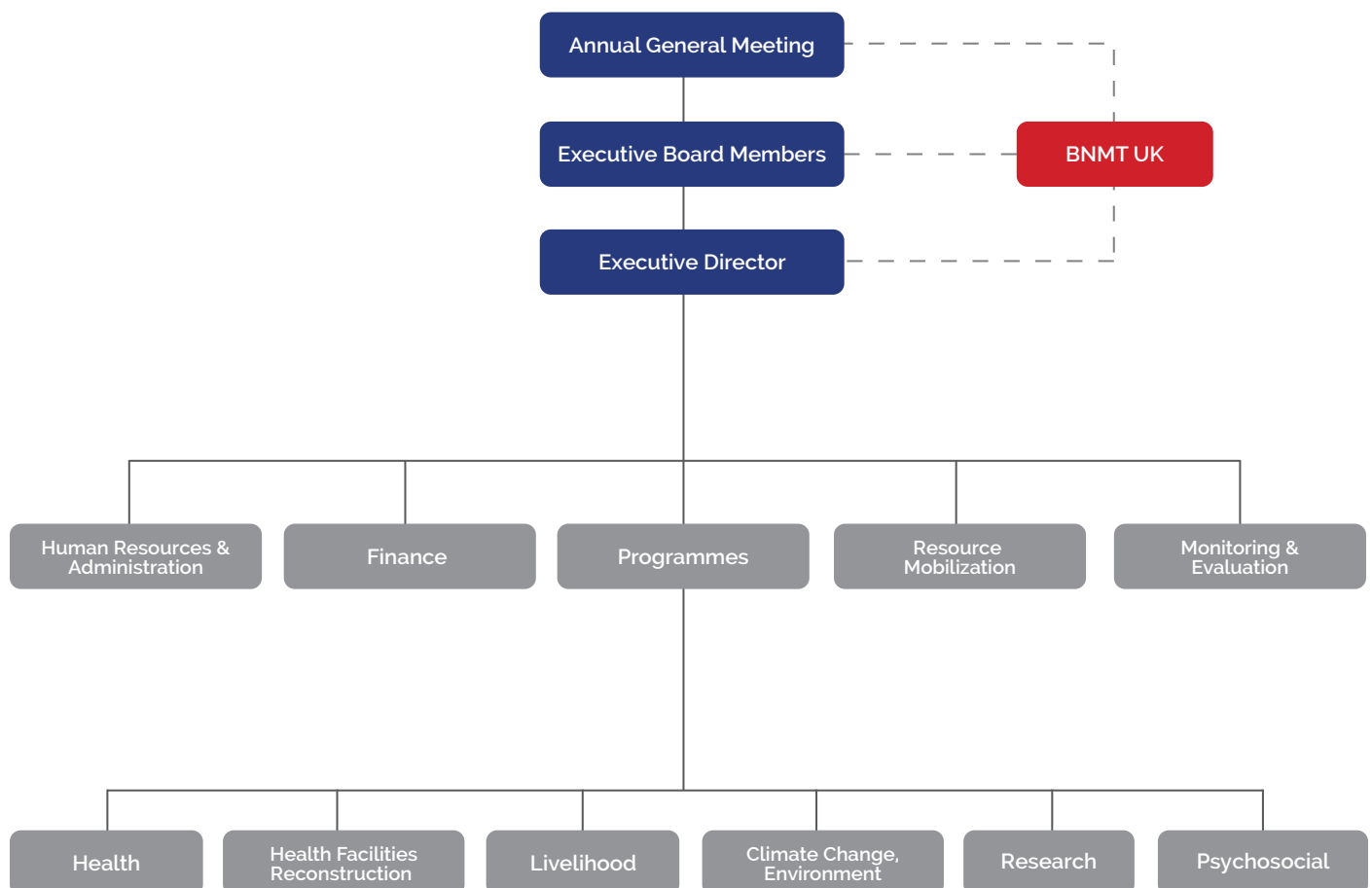


# BNMT AT A GLANCE

**BNMT Nepal** is a Nepalese non-governmental organization dedicated towards improving the health and well-being of Nepalese people. BNMT Nepal envisions a new Nepal where all Nepalese are aware of their basic rights and are able to live healthy and productive lives, in a safe environment without having to worry about food, income or security regardless of their gender, ethnicity, disability or HIV status.

BNMT Nepal is built on the foundation of Britain Nepal Medical Trust UK with commendable history of serving the people of Nepal since 1967. Since its inception, BNMT Nepal continues to support the Government's interventions on child health, maternal health and to combat HIV/AIDS, malaria and other diseases. BNMT Nepal has worked tirelessly in strengthening the capacity of local institutions in responding to community health needs, empowering communities, especially disadvantaged groups, in accessing and advocating for increased, improved, and equitable access to essential health services and developing innovative models and approaches that provide affordable and accessible quality health care services.

## BNMT NEPAL ORGANIZATIONAL STRUCTURE









**BNMT NEPAL**  
PROJECT COVERAGE DISTRICTS OF NEPAL 2016



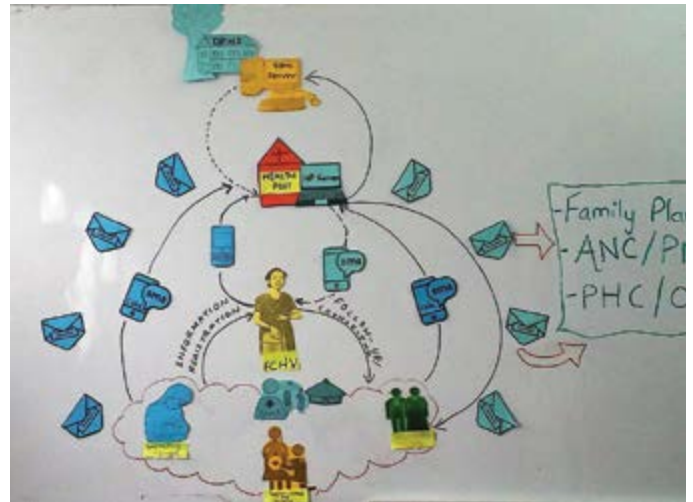




# PHOTO GALLERY



Mr Shrikrishna Bhatta, Director, NHTC delivering Welcome Speech during MHPSS training



Strategic Chart prepared by in-house team while writing a proposal



Art Counselling during Psychosocial Intervention



Meeting with DHO, Makwanpur



Health Camp at Sipapokhare, Sindhupalchowk



Prof Dr Saroj Ojha facilitating training on MHPSS



## VISION

Improved health and well-being of the Nepalese people.

## MISSION

To ensure equitable access to quality health care and an enabling environment for socially and economically disadvantaged people.

## PROGRAMME FOCUS

Health, climate change and environment – contributing to improved health, livelihood and social harmony.

## WORKING PRINCIPLES

Adhere to and appreciate partnership at all levels

Ensure sustainable development

Respect for equity and diversity

Inclusion

Promote transparency and accountability

## WORKING APPROACHES

Human rights based

Partnerships and alliances

Participatory, gender and social inclusion

FOR MORE DETAIL  
SCAN QR CODE



### OFFICE ADDRESS

#### HEAD OFFICE

**Birat Nepal Medical Trust (BNMT Nepal)**

PO Box : 20564 Lazimpat-2, Kathmandu

Phone : +977 1 4441918

Fax : +977 1 4439108

Email : [bnmtnepal@bnmt.org.np](mailto:bnmtnepal@bnmt.org.np)

Website : <http://www.bnmtnepal.org.np>

#### REGIONAL OFFICE

**Birat Nepal Medical Trust (BNMT Nepal)**

DPHO Complex, Devkota Chowk, Biratnagar Morang

Phone : +977 021-521520

Fax : +977 021-521520

**Birat Nepal Medical Trust (BNMT Nepal)**

Bhrikuti Nagar-1, Water Park, Nepalgunj, Banke

Phone : +977 081-527889